

TRAFFORD

Short Breaks



For children and young people with complex and additional needs.

2014/15

WELCOME

to our Trafford Short Breaks brochure for 2014/15

We are Stockport CP Society, a local independent parent/carer led charity with a sixty year history.

We are proud of our commitment to provide a range of services of the highest quality. Our mission is to ensure that people who have disabilities are equally valued and empowered to live full and rewarding lives. We strive to provide a unique range of services, which reflect individual need and choice through an integrated provision and specialised support. We are committed to the achievement of quality standards in all areas of service delivery; we have a philosophy of continuous improvement and strive to achieve positive outcomes for all who use our services.



“ Whatever you need, we are here to support and help you live life to the maximum. ”

Please visit our main website www.stockportcp.co.uk to see the scope of the services we offer in the 6 Local Authority areas we cover.

Short Breaks



At Stockport CP Society we pride ourselves on the wide range of personalised provisions we offer under our Short Breaks Service. With our recent expansion of the service, we are now able to offer a broader range of options to those individuals residing in Trafford.

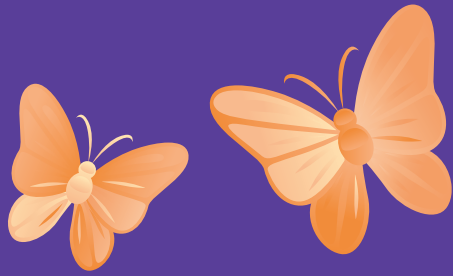
The service ranges from weekly activity clubs to holiday schemes to residential weekend breaks specially run for children and young people with physical and /or learning disabilities including those with complex and additional needs and autistic spectrum conditions. We have a fantastic variety of breaks on offer, each suitable for all abilities and backgrounds. We've been delivering short breaks for over 20 years which means we have the experience and 'know how' to make your time with us as enjoyable as possible.

But don't just take our word for it...

David said "I had a fantastic time on my short break, the staff were excellent".

Patricia said "Hanna's short break provided some much needed respite for us as a family. She had a wonderful time and came back refreshed".





Activities



Our short breaks give you the opportunity to pursue a broad range of both physically challenging and more relaxed, social activities all with the emphasis on developing friendships and having **FUN!**

We are often asked about the types of activities that can be pursued and we aim to combine your requests with some taster sessions in order to broaden experiences and offer a more varied menu of activities.



“
The ‘menu of activities’ on offer within each service area is flexible so they can be adapted to better meet your requirements as and when wishes/interests change.”

Canoeing

Climbing

Caving

Archery

Orienteering / Rambling

Zip Lines

Bowling

Fishing

Tourist Attractions

Museum Visits

Theatre

Cinema

Ghost Tours

Play Themed Activities

...and much more!



What's on offer?

All of the following have been funded by Trafford Council and are **FREE** for disabled children and young people that meet the eligibility criteria stated on page 6.



Delamere Saturday Play Club

- Location:** Delamere School, Irlam Road, Flixton, Manchester, M41 6AP
- Timings:** Saturday's term-time
- Age range:** 5 to 7 year olds (10am - 1pm)
7 to 11 year olds (1.30pm - 4.30pm)
- Description:** Run in partnership with Delamere School, this service offers you access to well equipped play sessions. Activities change on a weekly basis and you have the choice of which activities you pursue. Activities include; cookery, art and crafts, sports, music, outdoor games and role-play.
- Transport:** Carers are asked to drop off and pick up their children and young people from Delamere School.
- Cost:** **FREE**
- Subsidised personal budget holder rate:** **£20** (A limited number of places are available at this subsidised price).



Delamere Holiday Scheme

- Location:** Delamere School, Irlam Road, Flixton, Manchester, M41 6AP
- Timings:** Various 5 hour days during school holidays. All sessions have to be pre-booked and are limited to 6 children per group.
- Age range:** 5 to 11 year olds
- Description:** Run in partnership with Delamere School, this service provides play opportunities during the school holidays. You will access well-equipped play sessions as well as a range of activities including cookery, art and crafts, sports, music, outdoor games and role-play.
- Transport:** Carers are asked to drop off and pick up their children, young people from Delamere School.
- Cost:** **FREE**
- Subsidised personal budget holder rate:** **£30** (A limited number of places are available at this subsidised price).



Youth Outdoor Pursuits Group

- Location:** Variable
- Timings:** 1 session per week from 6pm - 9pm. All sessions have to be pre-booked.
- Age range:** 11 to 18 year olds
- Description:** You'll be collected from Stretford Mall and then taken to a range of exciting outdoor pursuits (weather and season permitting) that can range from climbing, canoeing, shooting, archery, bowling and much more.
- Transport:** Pick up/drop off at Stretford Mall
- Cost:** **FREE**
- Subsidised personal budget holder rate:** **£25** (A limited number of places are available at this subsidised price).

Holiday Scheme

Location:	Various local and regional leisure venues
Timings:	Various days/sessions during the School holidays. All sessions, which are up to 5 hours, are limited to 6 users per group.
Age range:	11 to 18 year olds
Description:	This service provides a range of activities during the school holidays. You'll be able to participate in a variety of leisure pursuits that can range from climbing, canoeing, shooting, archery, bowling and much more.
Transport:	Available from selected meeting points within the Borough
Cost:	FREE
Subsidised personal budget holder rate:	£50 (A limited number of places are available at this subsidised price).



Weekend Day Trips

Location:	Various locations around the North West and beyond
Timings:	Throughout the year from 9am-5pm. All sessions have to be pre-booked and are limited to 6 users per group.
Age range:	8 to 18 year olds
Description:	This service offers a varied menu of weekend day trips that enable you to access a range of adventurous leisure activities like canoeing, archery or climbing plus a selection of fantastic destinations such as museums or famous tourist attractions across the region and beyond.
Transport:	Available from selected meeting points within the Borough
Cost:	FREE
Subsidised personal budget holder rate:	£75 (A limited number of places are available at this subsidised price).



Weekend Breaks

Location:	10th – 12th October 2014 Dukes Barn Outdoor Activity Centre (Peak District) 13th – 15th February 2015 York City Break
Timings:	Various weekends throughout the year for up to 2 nights. All breaks are limited to 7 places per break and must be pre-booked.
Age range:	8 to 18 year olds
Description:	This service offers residential weekend breaks in a variety of locations across the UK. You'll experience a range of leisure pursuits from orienteering/rambling to museum visits to archery and climbing. All of the breaks are designed in consultation with you, and your parents/carers.
Transport:	Available from a centralised meeting point in the Borough
Cost:	FREE
Subsidised personal budget holder rate:	£499 - £550. Please note that a deposit of £50 is required to secure booking. (A limited number of places are available at this subsidised price).

Personal budget holders

We have set aside a small number of subsidised 'fee based' places on each of our short breaks for those in receipt of a personal budget. All of our prices are inclusive of full board accommodation (where applicable), activities, home visit, transportation (from set pick-up points where applicable) and all necessary support.

If more care is required, a supplementary cost to your short break will apply, which we will discuss with you. A non-refundable deposit is required to secure any residential weekend break and full costs are required for other short breaks that are not residential. Please pay / send this after the initial booking has been made.

With regards to the residential weekends the final balance, which you will be invoiced for upon receipt of the deposit, can be paid at any time but at least 4 weeks before the start of each break. Bookings made within this period must be paid in full at the time of booking. All prices are based on shared room occupancy (nearly always twin). Single rooms are often available but are charged at £25 per night supplement. You are welcome to bring your own staff. We charge 40% of the total short break cost to cover expenses and loss of saleable customer place. We will still run the short break at normal staffing levels.

There are a limited number of places and we ask that any interested personal budget holder contact us via our enquiry line/email address to make a referral.

How to book a place:

Eligibility

First you will need to ensure that you meet Trafford Council's eligibility criteria for short breaks by being under 18 years of age, reside in Trafford, and have one or more of the following:

- ASD/Aspergers including behaviour that is deemed challenging
- Physical and/or learning disabilities
- Communication needs and/or sensory impairments
- Complex health needs.



Making a referral

All referrals must go through to Stockport CP from either a professional or a carer:

- Professionals must provide a CAF or a SARF in order to make a referral
- Carers can make a referral directly to us at Stockport CP if they meet the above eligibility criteria.

On receipt of an enquiry we will go through our referral form with you over the telephone to gather information. Following this we will arrange for the relevant service coordinator to make further contact with you within 48hrs to confirm if your child or young person is eligible to access the short break service.

Please contact our enquiries team on 0161 432 1248 or email enquiries@stockportcp.co.uk to enquire and make a referral.

What next?

Once you have had a place confirmed we will arrange a home visit with you to enable you to gain more information on the short break service and to enable our staff to get a clear understanding and be ready to meet your specific support requirements.

Care and support

Our staff are highly experienced and receive ongoing supervision and a comprehensive training programme to ensure their knowledge and skills are kept up to date. Our volunteers access training through our volunteer training programme and are then supported through our 'buddy' mentoring system. All staff and volunteers are DBS checked. Our breaks are aimed at children and young people with complex and additional needs. Our support levels reflect this need, however if you consider that you need additional staff support, we can discuss this with you during your home visit.

Monitoring and quality

We have policies and procedures in place to underpin all of our work that ensure the health, safety and well being of each person we support. We positively welcome feedback from you and your carers for all our projects and actively encourage responses through a range of accessible evaluation formats both before and after the short breaks have taken place. We use customer feedback to make our short breaks the best they can be.

Transportation

We are only able to offer pre-determined pick-up/drop off points around the Borough for certain short break services as stated under the description of each service. We don't have the resource to collect or drop individuals to/from their home addresses.



The boring but important stuff...

Cancellations

We ask that carers are mindful of the demand for our short breaks and where possible inform us with as much notice as you can if you need to cancel so that we can ensure another young person can benefit.

Personal budget holders - If you cancel your booking you will lose any deposit. If this happens more than 4 weeks from travel you will receive a full refund minus any deposit. If you cancel within 4 weeks of the service delivery you are not entitled to any refund. It is recommended that you purchase travel insurance to cover this and other eventualities in relation to the residential weekends.

Short break changes

We will make every effort to fulfil the scheduled programmes but reserve all rights to change dates and itinerary, and cancel short breaks if deemed absolutely necessary. In such circumstances we will inform you at the earliest opportunity.

Personal budget holders - we would in these circumstances give a full refund including any deposit paid.

Insurance

Stockport CP Society has a comprehensive public liability insurance policy but does not provide individual travel cover.

Personal budget holders - In relation to the residential weekends, we recommend that you purchase your own fully comprehensive insurance policy to cover all eventualities including cancellation cover for your break.

Lost property

Every effort is made to ensure the safe return of all items but Stockport CP Society takes no responsibility for any loss or damage to customer property.

Medication

We can only dispense pharmacy labelled medication. All customers must adhere to Stockport CP Society's medication policy which will be detailed in your short break information sheet.

Short break termination

Stockport CP Society reserves the right to terminate a customer's short break for behavioural or medical reasons.

Personal budget holders - If this event occurs it is your responsibility to arrange transport home from the break venue. Otherwise you will be billed in full for transport and staff costs incurred. It is strongly advised that you take out insurance to cover this eventuality, particularly in relation to the residential weekends.



We have some additional residential weekend breaks specifically for personal budget recipients. If you would like more information or a brochure, please contact us.

T: 0161 432 1248

E: enquiries@stockportcp.co.uk

W: www.stockportcp.co.uk



Short Breaks Funded by
Trafford Metropolitan Borough Council

Compliments and complaints procedure

Please make any compliments or complaints in writing to
Mr Geraint Hughes, at the address below.

Stockport CP Head Office, Granville House,
20 Parsonage Road, Heaton Moor, Stockport SK4 4JZ

(A charitable company limited by guarantee - No. 2683946 - Registered Charity No.1009768)